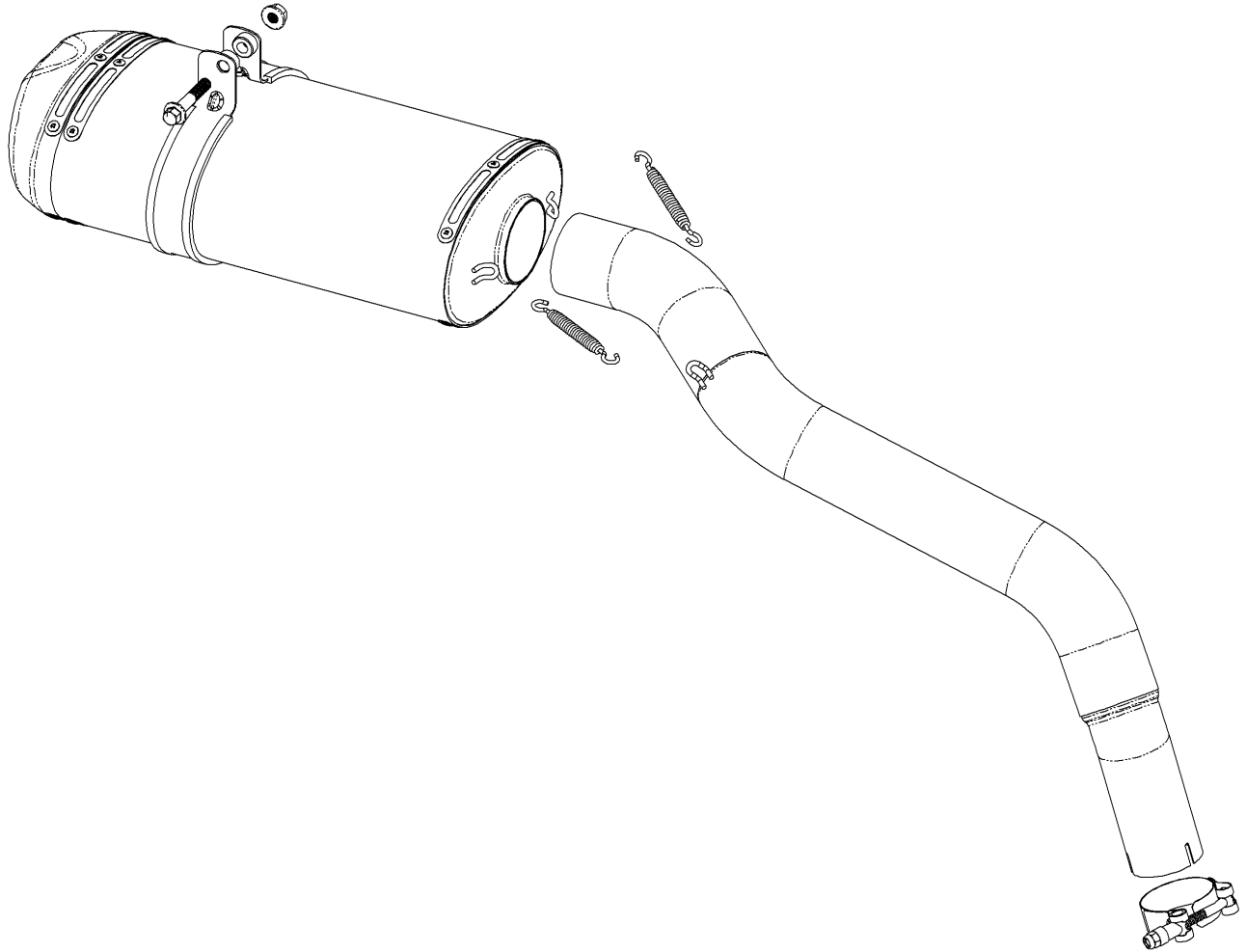




18-1017-524-02, 18-1017-624-02

DUAL OUTLET RT-1 SLIP-ON EXHAUST

HONDA CBR1000RR
2004-06



PARTS INCLUDED

- 1 - S-bend Tube
- 1 - Muffer
- 1 - Muffer Strap
- 1 - Silicone Strip
- 2 - Swivel Spring
- 1 - M8-1.25x45mm Hex Flange Head Bolt
- 1 - M8-1.25 Hex Flange Nut
- 2 - Muffer Strap Spacer
- 1 - T-Bolt Clamp

TOOLS REQUIRED

- Ratchet
- Sockets
- Wrenches
- Spring Pull Tool

18-1017-524-02, 18-1017-624-02

DUAL OUTLET RT-1 SLIP-ON EXHAUST

HONDA CBR1000RR
2004-06

INSTALLATION INSTRUCTIONS

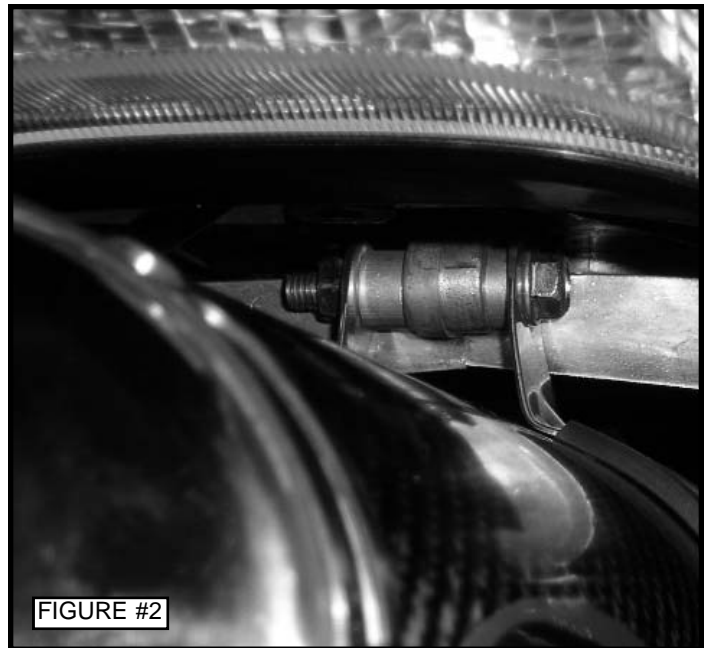
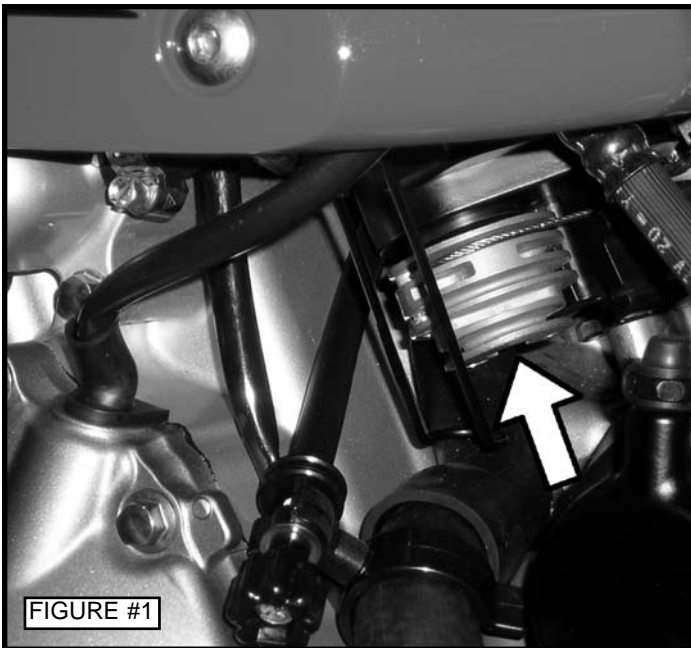
- 1) Place the motorcycle in a vise or on it's kick stand and make sure it is safe and secure.
- 2) Remove the rider and passenger seats. Unplug the tail light, license plate light, and turn signals wires inside the tail section.
- 3) Remove the four bolts that secure the tail section to the subframe. Carefully remove the tail section from the subframe.
- 4) Remove the four bolts that secure the license plate/turn signal mount to the subframe. Remove the mount from the motorcycle.
- 5) Remove the two bolts that attach the right side footpeg assembly to the motorcycle. Disconnect the rear brake light switch and swing the footpeg assembly out of the way. Remove the outer plastic foot guard. Remove the aluminum heat shield from the motorcycle.
- 6) Remove the clamp on the midpipe to tailpipe connection, just before the exhaust valve. Loosen the clamp at the headpipe to midpipe connection. Remove the cover from the exhaust valve. Loosen the jam nuts that secure the exhaust valve cables to the valve. Disconnect the cables.
- 7) Remove the midpipe mounting bolt, located on the right side of the subframe. Remove the muffler mounting bolts. Lower the muffler and remove the rear exhaust section from the midpipe. Remove the midpipe from the headpipe outlet.
- 8) Remove the large heat shield from under the sub frame.
- 9) Disconnect the exhaust valve cable from the actuator on the left side of the motorcycle and remove the cables. See Figure #1.
- 10) Place the provided t-bolt clamp onto the new s-bend inlet and slide it onto the headpipe outlet. Do not fully tighten at this time. **NOTE:** Make sure that the t-bolt clamp is positioned so that you can tighten it when installed on the motorcycle.
- 11) Slide the Jardine dual outlet muffler onto the s-bend outlet and secure it to the s-bend using the two supplied swivel springs.
- 12) Attach the supplied rubber strip to the inside of the muffler clamp. Slide the muffler clamp over the muffler, with the offset holes toward the front of the motorcycle, and squeeze both muffler clamp tabs together. Secure the muffler clamp to the sub frame using the two supplied spacers, M8-1.25x45mm hex flange head bolt, and M8-1.25 hex flange nut. Do not fully tighten yet. See Figure #2.

18-1017-524-02, 18-1017-624-02

DUAL OUTLET RT-1 SLIP-ON EXHAUST

HONDA CBR1000RR
2004-06

- 13) Position the exhaust system so that all parts are in their best possible orientation. Fully tighten the t-bolt clamp and then the muffler clamp.
- 14) Clean all fingerprints from the exhaust. WD40 should be used to clean any titanium. Start the motorcycle and check for any exhaust leaks.
- 15) Reinstall the small aluminum side heat shield. Reinstall the right side foot peg assembly. Reinstall the plastic outer foot guard.
- 16) Reinstall the license plate/turn signal mounting bracket. Feed the wiring up through the subframe and connect the plugs to their corresponding colors.
- 17) Reinstall the tail section. Reconnect the tail light wire.
- 18) Reinstall the rider and passenger seats.



18-1017-524-02, 18-1017-624-02

DUAL OUTLET RT-1 SLIP-ON EXHAUST

HONDA CBR1000RR
2004-06

LIMITED WARRANTY INFORMATION

All Jardine products are warranted against defective materials and workmanship for a period of 90 days from date of original consumer purchase. Any non-defective item may be returned within 7 working days, and will be subject to a 20% restocking/repackaging fee.

WHAT IS WARRANTED:

Any Jardine product returned, with prior approval, for defective materials or workmanship including chrome blistering, peeling, bubbling, or any unused (new) Jardine product with rust damage.

WHO IS COVERED BY WARRANTY:

The original purchaser of the Jardine product who contacts Jardine first for approval, and who provides all the requested information of proof of purchase. Defective items may be returned to where they were purchased from (dealer, distributor, etc.) or directly to Jardine Performance Products for expediting.

WHAT IS NOT WARRANTED:

Any Jardine product returned for chrome bluing.

Any Jardine product damaged or rendered inoperable and/or ineffective as a result of other accessories or modifications to the motorcycle.

Any Jardine product returned for missing hardware (contact Jardine for claims of missing hardware).

Any Jardine product returned without prior approval, R.O.G. (Return of Goods) number, and proof-of-purchase.

Any Jardine product that is not from the original owner.

Any Jardine product older than 90 days.

EXTENT OF WARRANTY:

Returned goods must be sent freight prepaid to Jardine with R.O.G. number clearly marked on the outside of the package. Any product sent without prior approval, R.O.G. number, and proof-of-purchase will be refused. Items damaged in shipping are the responsibility of the freight carrier and all such claims must be made with the freight carrier.

Jardine reserves the right to either issue credit for the defective items, or replace the defective item. Any returned product found to be unopened (new), or free of defects will be returned freight collect to the customer.

Jardine will not be responsible for any other expenses, including labor for removal of defective parts, incurred by the customer under the terms of this warranty. Nor shall Jardine be responsible for any damages, whether consequential, special, contingent, or otherwise, or expenses or injury arising from the use of the Jardine product.